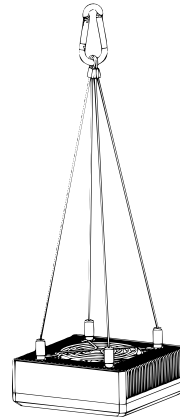
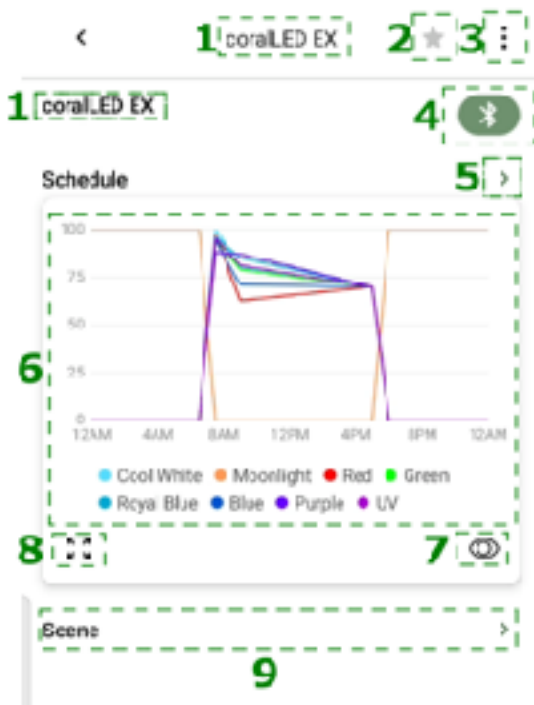


# koralLED APP User Manual -English

- Initial Introduction
- schedule setting
- scene management
- Schedule Copy & Paste



## 1.koralLED inicial introduction



1. LED light name
- 2.Tap to set "★"Favorite Device or "★"General Device
- 3 koraLED settings "⋮" icon , including Edit Settings, Delete Device, Restore Default Settings, and Schedule Copy & Paste
- 4.Tap connection "📶" or disconnection "✖" .
- 5.Tap ">" to access Schedule Settings
- 6.Spectral Schedule Chart
- 7.Tap "🕒" one-Minute Preview
- 8.Tap "📱" Schedule Chart Horizontal Expansion"
- 9.Scene Management

## Detailed settings for the LED light

Tap the menu "⋮" icon in the top-right corner to access advanced settings.

Options include:

- 1.Edit: Configure the name and tank location. °
- 2.Delete: Remove the current device
- 3.Restore Default: Clears all schedules but keeps the device registered. After this, the device can be found in the Unassigned Tanks section on the home page.
4. Schedule Copy & Paste:Copy the current lighting schedule and paste it to another compatible LED light or reuse it on the same device.

## 2.Schedule Settings

The koralCore APP offers a convenient, flexible, and dedicated LED lighting schedule management system.

This includes:

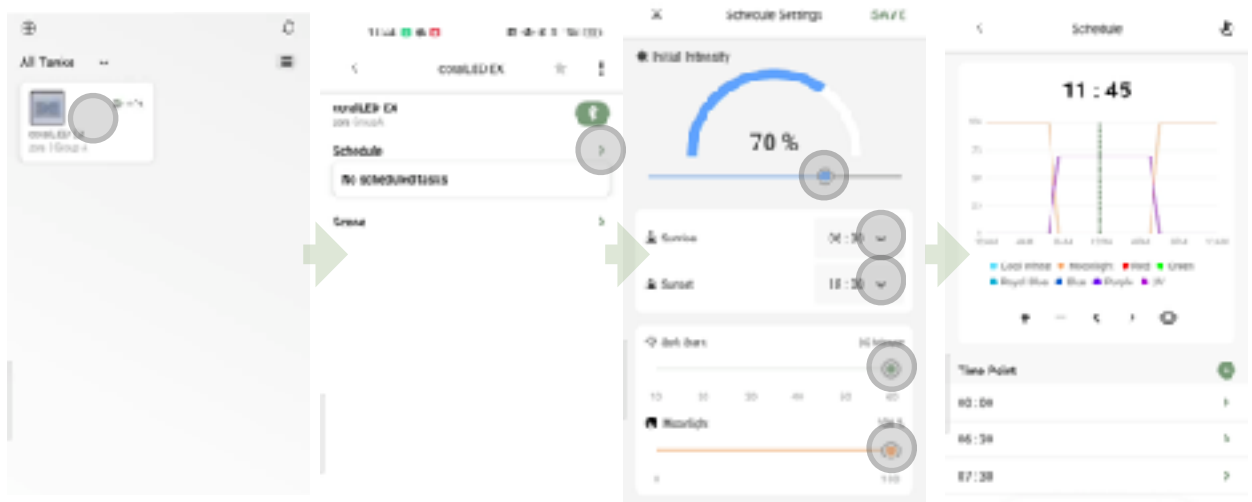
- 1.Quick Setup to establish an initial scheduling plan.
- 2.Detailed Schedule Editing and Spectrum Planning.

### 2.1 Quick Schedule Setup

By default, koralLED starts with no schedule. Quick Setup allows you to complete the scheduling process within **50 seconds**.

**Steps:**

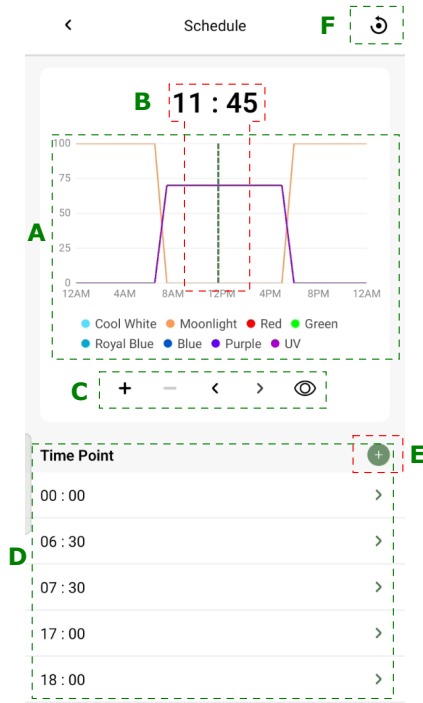
1. On the APP home screen, click koralLED to start setup
2. Tap the Bluetooth connection icon, then tap Schedule Settings ">" icon to enter the Quick Setup screen
3. Set "All Spectrum Intensity," "Sunrise Time," "Sunset Time," "Soft Start," and "Moonlight"
4. Complete Quick Setup



## 2.2 Detailed Schedule Editing and Spectrum Planning

koralCore offers a visual scheduling interface that allows for the addition and deletion of time points and detailed adjustments for each time point's spectrum.

Interface Components:



A. Visual Schedule Chart

B. Time Indicator Line - Displays current LED light time

C. Schedule Editing Tools

- + : Add Time Point
- - : Delete Time Point
- < : Move Time Point Forward
- > : Move Time Point Backward
- 🕒 : View a 24-hour schedule within a minute

D. Time Point Area - Click ">" icon for spectrum settings.

E. Tap "+" icon to add time point and edit spectrum directly.

F. Tap "🕒" icon to clear all scheduling content and use Quick Schedule Setup.

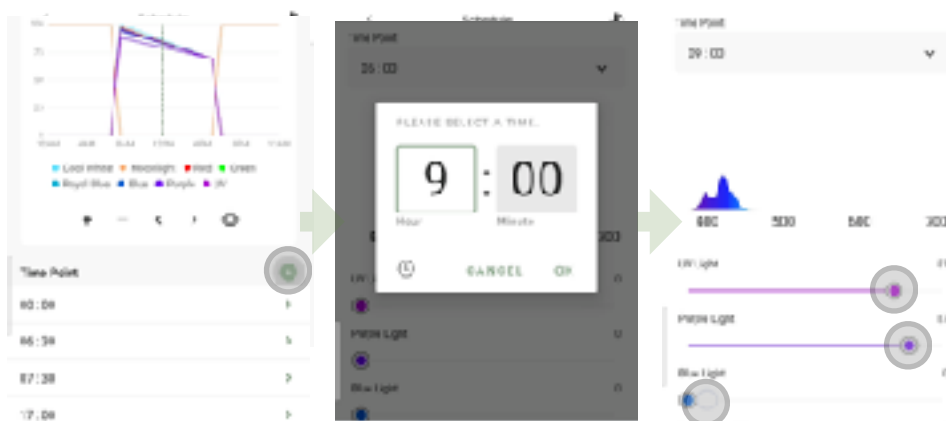
### (1) Steps for Detailed Schedule Editing

#### Method 1: Schedule Chart Editing

- Drag the schedule line to the specified time.
- Use the "+" tool to add a time point.
- Click the new time point to edit the spectrum.

#### Method 2:

- Click the "+" icon in the Time Point Area to add a time point and edit the spectrum directly.



### (1) Delete Time Point

Use the “<” or “>” tools to locate the time point to delete, then click the “-” icon to delete it.



### (3) Edit Spectrum

Click in the Time Point Area to edit the time point and adjust the spectrum, then click “Save”.



### (4) Clear Schedule Data

Connect via Bluetooth, go to Schedule Settings, click the “⌘” icon, and clear all schedule data. Confirm to return to Quick Schedule Setup.

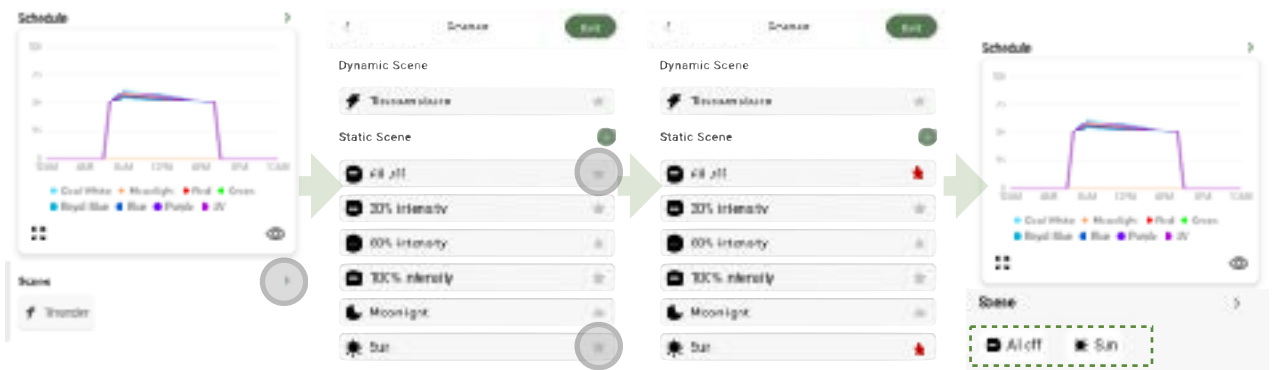


### 3. Scene Management

korLED includes scene management, offering both preset scenes and customizable options to enhance user enjoyment in cultivation. Note: Running a scene will pause the schedule. Remember to revert to the schedule after use.

#### 3.1 Use a Scene

Go to the Scene page and tap the star icon of the scene you want to use. Once the star turns red, the scene is added to the LED home page. You can then tap the scene on the home page to activate it immediately.



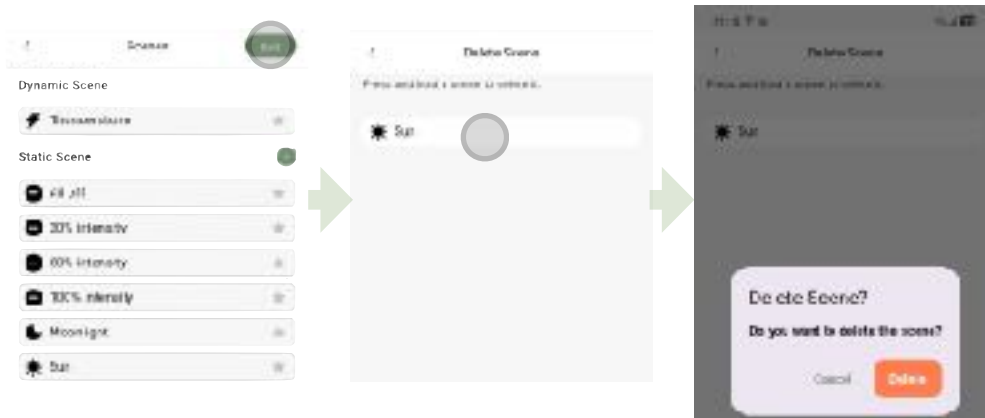
#### 3.2 Add Custom Scene

Connect via Bluetooth, click “>” in the scene area to enter the scene settings screen, and click “+” icon to add a new scene. Enter the scene name, select a scene icon, and add a spectrum. Click “Save” to complete.



### 3.3 Delete Custom Scene

ClickGo to the Scene page and tap “Edit” in the upper-right corner. Press and hold the custom scene you want to delete, then follow the on-screen prompts to complete the deletion.



### 4. Schedule Copy & Paste

Tap the menu icon in the upper-right corner to access schedule management options.

#### 4.1 Copy Schedule

Tap “Copy schedule” to save the current 24-hour lighting schedule. Enter a name for the schedule, then tap “Save”.



#### 4.2 Paste Schedule

Tap “Paste schedule” and select a saved schedule from the list. Follow the on-screen prompts to apply the selected schedule to the current LED light.



### 4.3 Delete Saved Schedule

Tap “Delete saved schedule” to remove previously saved schedules that are no longer needed.

