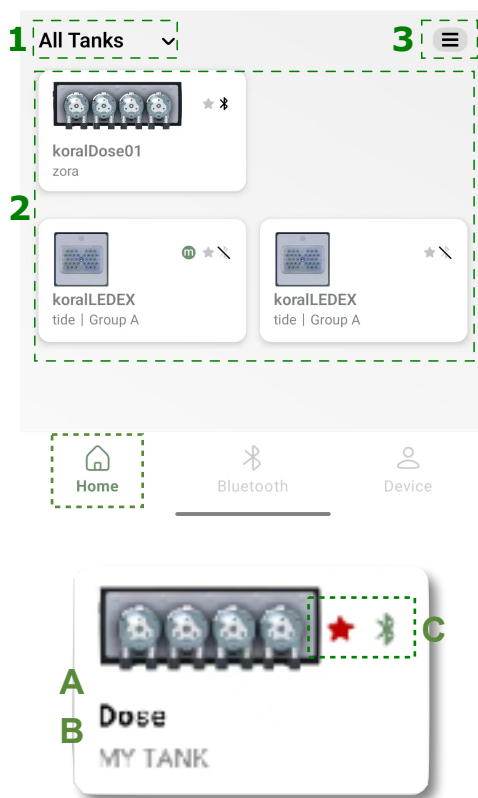


KoralCore Initial Setup Guide

- koralCore Home Page overview
- Add Devices
- Delete Devices
- Tank Management

• koralCore Homepage Overview

Open the app to access the home page, where you can manage your devices and settings.



•Home Section:

- 1.Device Display Options:** Choose between “All Tanks,” “Favorite Tank,” “Specific Tanks,” or “Unallocated Tanks.”
- 2.Device Operations Area:** Displays registered devices. Tap a device to access detailed settings and controls.
- 3.Tank Management:** Add, delete, or rename tanks as needed.

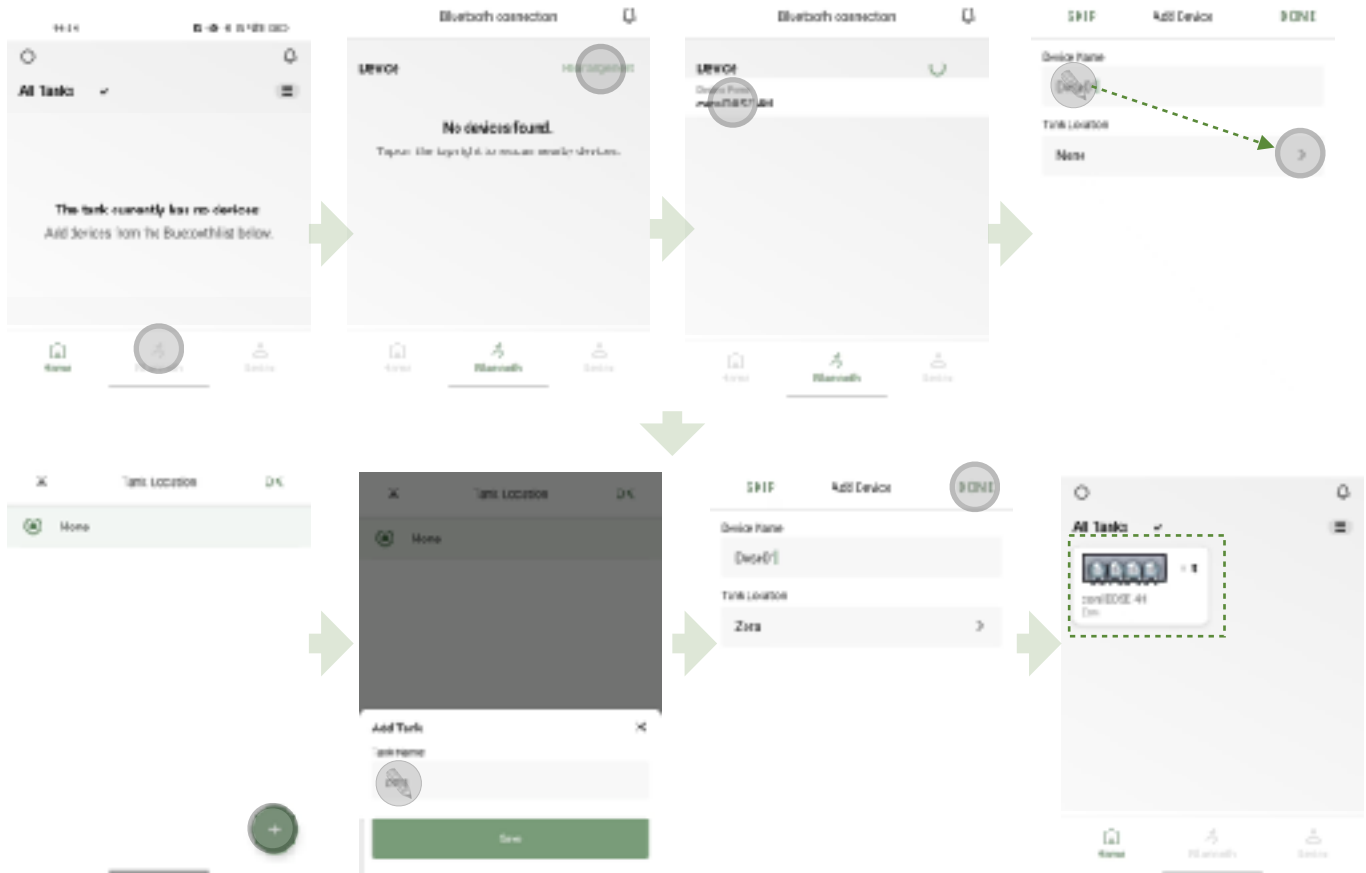
•Device Operations Area

- A.Device Name
- B.Associated Tank
- C.Device Status
- ★ Favorite Device ; ★ General Device
- ⌘ Bluetooth Connected ; ✖ Bluetooth Disconnected

• Adding a New Device

- 1.Tap the Bluetooth icon at the bottom of the home page.
- 2.Tap “Scan Device” at the top.

3. Select the device you want to add.
4. Enter the device name.
5. Tap the ">" icon next to the tank selection field.
6. Select an existing tank, or Tap the "+" icon at the bottom right to add a new tank.
7. Enter the tank name.
8. Tap "Save" to complete device setup.



• Deleting a Device

There are two ways to delete a device.

Method 1: From the Home Page or Device Page

1. Press and hold the device card on the Home page or Device page.
2. Tap "Confirm" to delete the device.

Method 2: From the Device Home Page

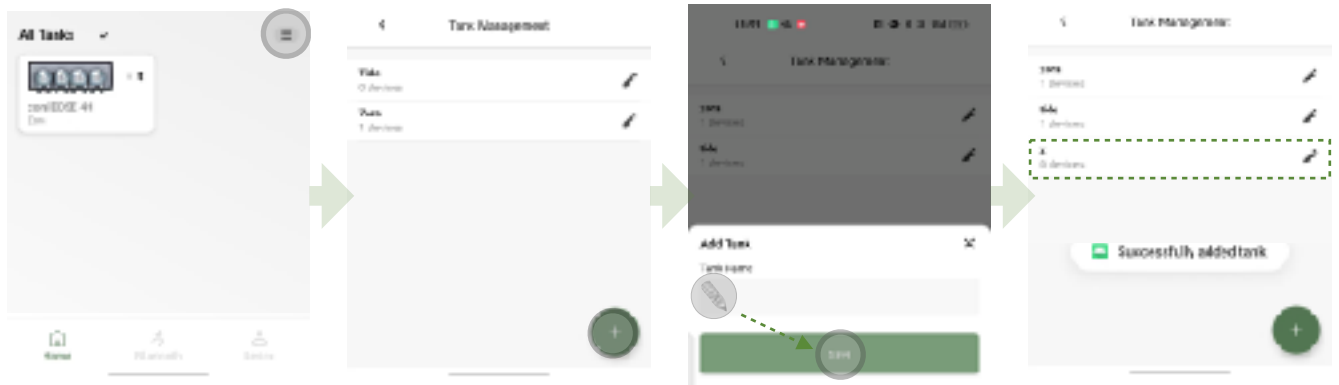
1. Enter the device's home page.
2. Tap the menu icon ":" in the upper-right corner.

3. Select “Delete device”.
4. Follow the on-screen prompts to confirm deletion.

• Tank Management

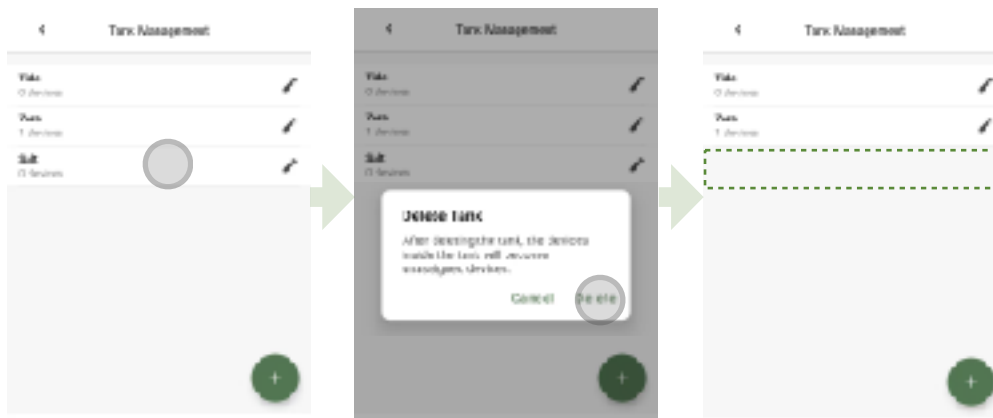
• Adding a Tank

1. Tap the “☰” icon at the top right to manage tanks.
2. Tap the “+” icon at the bottom right to add a tank.
3. Enter the tank name.
4. Tap “Save” to complete.



• Deleting a Tank

1. Press and hold the tank to delete until a confirmation dialog appears.
2. Confirm deletion to remove the tank.



- **Renaming a Tank**

1. Tap the "✎" icon next to the tank you wish to rename.
2. Enter the new name.
3. Tap "Save."

